

My Score saddle chair; optimum ease of operation

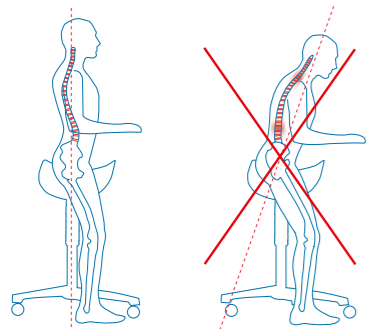


seats to suit!

1 The backrest is anatomically shaped and provides shoulder freedom and good support for your lower back.

2 Ergonomically shaped saddle seat opens the pelvis to improve spinal posture

3 To adjust the seating angle of your saddle seat correctly, pull the lever up and simultaneously bend your upper body slightly forward. The saddle seat will tilt. Make sure that the elevation of your pelvis is such, that this still ensures a correct and healthy back posture.



4 To adjust your saddle seat at the correct height, pull up the gaslift lever. Your saddle seat has the correct height if your feet rest on the ground and your knees are slightly bent.

5 Can be provided with a 'Balance' mechanism which allows small movements of the pelvis, allowing the user to adapt his/her posture. This encourages dynamic sitting which helps to improve core stability.

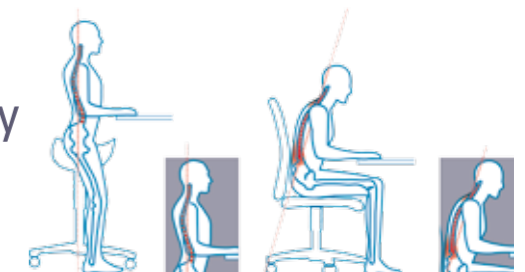


6 Standard provided with a Ø 54 cm aluminium base and large swivel castors for optimal mobility.



Saddle chairs Jumper and Amazone

- ergonomically shaped saddle seat
- available in a small and wide seat
- can be provided with a "Balance" mechanism (only for models without a backrest)
- seamless upholstery for hygienic workplaces
- new, also available in a nice "Bicolor" upholstery
- large castors for optimal mobility



Your Score reseller



Score BV
Feithspark 5
NL-9356 BX TOLBERT
The Netherlands
T. +31 (0)594-554000
F. +31 (0)594-554040
E. info@scorenl.com

Bicolor Jumper/Amazone



New, two-colour upholstery available for saddle chairs. Upholstered in Stamskin, the seat fabric can be chosen from three standard colours: bright green, bright red or orange. The border fabric of the bicolour is anthracite. If the model is provided with a backrest this will be upholstered in anthracite. Other colour options are available for a surcharge.



NEW!
Bicolor Saddle Chairs



Jumper/Amazone

De Jumper has a wider seat than the Amazone, often more comfortable for men. The Amazone has a narrower seat, usually more comfortable for women. Standard upholstered in black leatherette or various Stamskin colours, and various mechanism options, including the 'Balance'.

Seamless upholstery

For workplaces where hygiene is very important, the seamless upholstery provides outcome. The lack of seams prevents the accumulation of dirt. Used by dentists, surgeons, laboratories and schools. The seamless upholstery can be applied on both the Jumper as the Amazone.



Jumper/Amazone backrest

The saddle chair can be specified with an ergonomically shaped back for extra support. The backrest has a compact design to ensure that freedom of movement is not impaired. The backrest is in height and angle adjustable. The bicolour models that are provided with a backrest will be standard upholstered in anthracite. Other colour options are available for a surcharge.



Barrage

The saddle chair is available with an ergonomically shaped back and armrests. These offer extra support to reduce neck and shoulder complaints. The Barrage can be delivered with both Jumper and Amazone seat shapes.



Jolly

Saddle chair with the seat in the form of a bicycle saddle at a fixed sitting angle. Excellent mobile sit-stand stool, particularly suitable for working areas with limited leg space.

Jumper Balance en Amazone Balance



De zadelkrukken van Score kunnen extra worden uitgerust met een uniek instelbaar balance-mechaniek.

Het balance-mechaniek beweegt mee in de richting van het zwaartepunt van het bovenlichaam wanneer de gebruiker zijn houding aanpast. Dit werkt spierversterkend waardoor de conditie van de rug verbeterd.

De mate van beweging van het balance-mechaniek is, door aan de ring onder het zadel te draaien, geheel naar eigen voorkeur in te stellen. Voor lichtere mensen over het algemeen wat lichter, en voor zwaardere mensen wat zwaarder. De zadelvorm dwingt je al automatisch in een goede houding, dit gecombineerd met het balance-mechaniek maakt de Score zadelkrukken zelfs tot een unieke probleemoplosser.



Anti bacterial

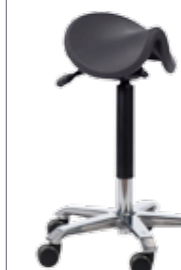
Amazone Stainless Steel

Stainless Steel is corrosion resistant and provides less opportunity for the growth of bacteria. Unique is the moisture resistant gaslift height adjustment. Ideal for hygienic and/or humid workplaces where frequently cleaned. The high legs make it possible to clean the floor easily. The saddle seat is created from PU (polyurethane) and is fire-resistant, CFC-free and resistant to many aggressive chemicals. For a high gloss effect and an even better protection, electrolytic polishing is an option.



Amazone/Jumper ESD

A ESD safe saddle chair has conductive components and upholstery that can be fitted with a resistance of 1Mohm for a controlled discharge. Here goes the motto: "no load, no discharge". Score ESD products meet the standard IEC 61340-5-1 and were tested by the "SP Technical Research Institute" from Sweden.



Amazone PU

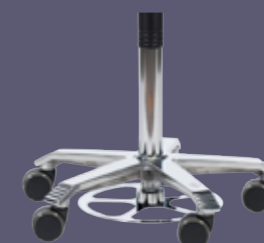
Amazone, provided with a polyurethane saddle seat which is resistant to various chemical substances and easy to clean. Also available with a backrest.

Saddle chairs Jumper and Amazone

- ergonomically shaped saddle seat opens the pelvis to improve spinal posture
- less tiring back posture strengthens the dorsal muscles and prevents backache
- provided with a small base and large swivel castors to optimise freedom of movement
- design makes it possible to work closer to the patient or working area than with a chair
- sitting position helps to reduce neck and shoulder complaints
- can be provided with a "Balance" mechanism which adapts to the movement of the user
- can be provided with a foot-controlled gas lift
- seamless upholstery available for workplaces where hygiene is very important
- available in two seat shapes: Amazone (smaller seat) and Jumper (wider seat)

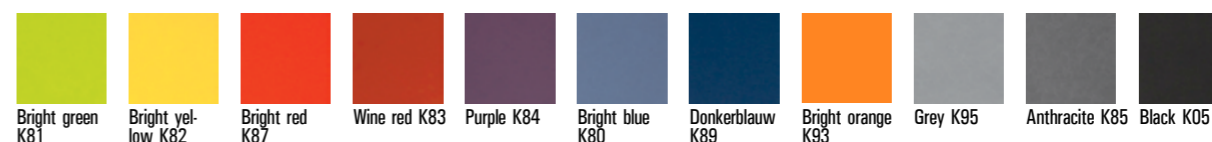
Tip: Foot control

The saddle chairs can be provided with a foot control. This way, the saddle chair can be set on the proper working height with your feet. Very useful if you would like both hands to be free for your work and/or should be sterile, such as surgeons.



Available colours:

Stamskin



Leatherette

