

# ROBUST WORKING CHAIRS

Score has been the market leader in industrial chairs and ergonomic accessories for over 25 years. Score stands for quality and innovation based on the latest in ergonomic thinking. A superior working chair in combination with the right ergonomic accessories promotes a good sitting posture and optimum productivity. It is an investment that pays for itself very quickly. Especially when you consider that good posture

helps to prevent back complaints and RSI. A good chair from Score need cost you no more than a single day's sick leave! We are proud to present some of our innovative products for you here. And if you would like to know more, your Score dealer will be pleased to tell you all about it.

## SPECIFICATIONS

### Work environments

- industry
- laboratories
- hospitals
- schools



Vinyl is a high quality synthetic material that is strong, hygienic and comfortable



The friction of plastic castors on synthetic floor coverings, generates static electricity. With an ordinary chair this may be discharged through the user, who experiences small but unpleasant shocks. Our ESD products are made conductive which means the static electricity is discharged straight to the floor.



Polyurethane is a long lasting material to survive harsh use and abuse. It is easy to clean, non-porous, water resistant and can stand up to most chemical liquids

### ERGO 2302

- work surface height 90-100 cm
- height adjustment 59-84 cm
- height adjustable footring (Ø 50 cm)

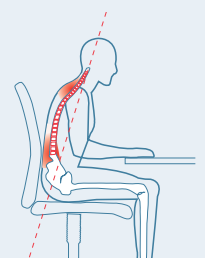


### JUMPER

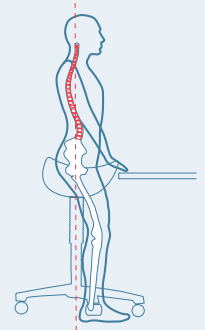
- work surface height 80-100 cm
- height adjustment 59-85 cm
- option ESD version
- option adjustable sitting angle
- option foot operation



### Unhealthy back posture



### Healthy back posture



### SIT STAND STOOL 232

- work surface height 80-100 cm
- height adjustment 59-85 cm
- option load-locked wheels
- option stainless steel base



### SPIRIT LINE

- work surface height 70-80 cm
- height adjustment 42-65 cm
- customisation



[www.scorenl.com](http://www.scorenl.com)

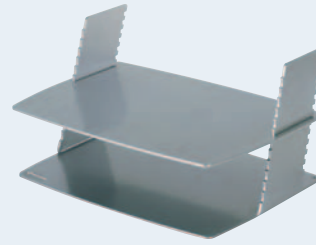
# WORKPLACE ACCESSORIES

## ACCESSORIES

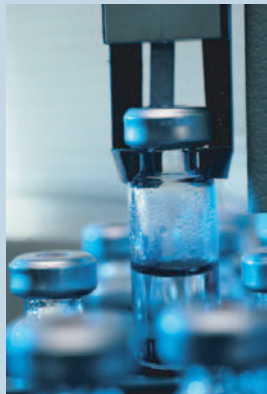
A good chair in combination with the right ergonomic accessories promotes a good sitting posture and optimum productivity. A small selection from our collection:

### MONITORMATE I

- for 15" and 17" monitors
- 12 position height adjustment: 2,5-17 cm
- surface: 27 x 38 cm
- maximum load capacity: 60 kg
- available in grey or alu-silver



A monitormate adjusted to the correct height promotes a healthy working position and helps to prevent back neck and shoulder complaints. The monitormate has 12 adjustment settings to raise your monitormate to the right working height for you



### BASIC 952

- size 42 x 32 cm
- foot operation
- height adjustment 8-29 cm
- work surface height 70-85 cm
- adjustable tilt angle
- option ESD version



If your feet don't touch the ground when you sit at your desk, a footrest is an excellent idea. The Basic 952 is compact and is suitable for any workplace. Recommended by ergonomists and occupational health and safety advisers.

Would you like to know more about Score products? If you would like a no-obligation quotation or would like us to send you our complete catalogue of industrial chairs, contact your nearest Score dealer or visit our website [www.scorenl.com](http://www.scorenl.com)

Your Score dealer:



 **SCORE**

[www.scorenl.com](http://www.scorenl.com)