



# Stainless Steel Line

When hygiene is essential

## Sit stand stools

If you often work in a standing position, a sit stand stool offers a convenient point of rest or support. It is ideal for work-spaces where equipment and table arrangements leave little leg room.



**More information?**

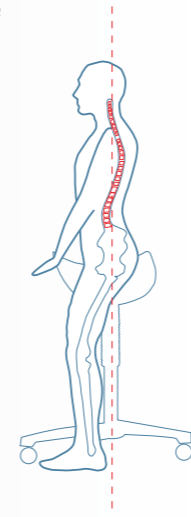
- For a no-obligation quotation or the complete "Industry & Office" catalogue, please contact your Score dealer

### Jumper

- polyurethane seat
- adjustable seat angle
- height range 64-90 cm
- work surface height 80-100 cm



- The advantages of a saddle seat is a healthy back posture and a perfect support



### 950

- hand operation
- height range 5-23 cm



### 832

- polyurethane seat
- adjustable seat angle
- height range 58-84 cm
- work surface height 80-100 cm



Postbus 24, 9356 ZG Tolbert-NL  
 Feithspark 5, 9356 BX Tolbert-NL  
 Tel. + 31 (0)594-554000  
 Fax. + 31 (0)594-554040  
 E-mail: info@scorenl.com



# Stainless steel Line

Unique to the new Stainless Steel-800-Line is height adjustment using a water-proof gaslift. The long lasting PU PRO (polyurethane) seat and backrest are non-flammable, CFC-free and easy to clean. The sophisticated design of the backrest provides extra freedom of movement for optimum performance. The Stainless Steel Line is widely used in clean rooms, hospitals and the chemical, pharmaceutical and food processing industries. When hygiene requirements are extreme, there is only one solution, stainless steel. The Stainless Steel Line is also rust-proof, easy to clean and high seat the space underneath the chair is also easy to clean.

## SPECIFICATIONS

- Workplace**
- food processing industry
  - chemical industry
  - pharmaceutical industry
  - clean rooms
  - medical sector

- Standard model**
- polyurethane seat and backrest
  - stainless steel base 304

- Standard adjustment**
- seat height
  - back height
  - back angle
  - seat depth

- Options en accessories**
- "Spirit" seat and backrest
  - armrests type 3
  - soft castors



an easy to adjust backrest with a special design for extra freedom of movement

polyurethane resists the wear caused by chemical cleaning

adjustable seat depth for greater comfort

unique rust-proof gaslift

height adjustable footring

thanks to its high seat, the space underneath the chair is easy to clean

801

- height range 44-60 cm
- work surface height 70-80 cm



812

- height range 57-82 cm
- work surface height 90-100 cm



810

- height range 45-65 cm
- work surface height 70-80 cm



802

- height range 58-84 cm
- work surface height 80-100 cm



chair also available with "Spirit" seat and backrest

