

>> Cleanroom Line

When working in a cleanroom it is of the highest importance to have and keep the room free of dust particles. Score has a complete line of cleanroom chairs, which are tested by the 'Fraunhofer Institute' and comply with the directive DIN EN ISO 14644-1, ISO class 4 (Class 10 according to the US Federal Standard 209E). These chairs are available in ESD leatherette or PU, which will not disperse or attract dust particles. As an extra security the leatherette seats of our cleanroom chairs are equipped with a Hepa filter. This filter ensures that, when you sit down or move on the chair, the dispersed air is always filtered and no dust particles will be released in the room. Scores cleanroom chairs are always ESD safe and may be used in 'Sensitivity Level 1' working environments (in accordance with SEMI E78-1102). In short: a Score cleanroom chair you will keep your cleanroom dust free.

SPECIFICATIONS

Standard adjustments

- sitting height
- back height
- back angle
- sitting angle

Standard model

- polished aluminium base
- soft castors ESD



Options & Accessories

- ESD trumpet glides
- soft castors, brake loaded
- armrest type 5 ESD



Would you like to know more?

For a no-obligation quotation or our complete catalogue, contact your nearest Score dealer

Your Score dealer:



>> 2300 Cleanroom

Class 10 cleanroom chair with HEPA-filter.

- height adjustment c. 46-59 cm
- work surface height c. 70-80 cm



High chair with height adjustable footring (Ø 50 cm)

>> 2301 Cleanroom

- height adjustment c. 54-73 cm
- work surface height c. 80-90 cm

>> 2302 Cleanroom

- height adjustment c. 60-85cm
- work surface height c. 90-100 cm



>> 2308 Cleanroom

High chair with height adjustable footplate that moves up and down with the seat

- height adjustment c. 60-85 cm
- work surface height c. 90-100 cm



>> Guarantee



- Life-long guarantee on the gas lift
- 5-year guarantee on all metal parts in normal use
- 2-year guarantee on upholstery in normal use



P.O. Box 24, NL-9356 ZG Tolbert
Feithspark 5, NL-9356 BX Tolbert
The Netherlands
T. + 31 (0)594-554000
F. + 31 (0)594-554040
E. info@scorenl.com

>> ESD & Cleanroom

ESD safe because shocks are not allowed

Cleanroom because each dust particle is one too many



- Prevents damage to electrical equipment
- Prevents unpleasant shocks
- Constructed from conducting parts and with a resistance level of 1Mohm
- Can be delivered in Dralon, Leatherette or Polyurethane
- Can be equipped with ESD safe armrests
- Made in accordance with the latest ergonomics opinions
- Extensive range of products:
 - Chairs
 - Stools
 - Sit-stand stools
 - Saddle seats
 - Footrests
- Most ESD safe products are also available in a cleanroom version



>> ESD Line

ESD, ElectroStatic discharge, is developed due to friction between different materials. For example, if you touch metal or, even worse, an ESD-sensitive component, you will feel small but unpleasant shocks when it discharges. Annoying for you, but damaging for the electrical component you are working with. As a result you can face very high costs for repair or even replacement. You can prevent this happening by making your workplace ESD safe.

SPECIFICATIONS

Standard adjustments

- sitting height
- back height
- back angle
- sitting angle



Standard model

- polished aluminium base
- soft castors ESD



Options & Accessories

- ESD trumpet glides
- soft castors, brake loaded
- inflatable lumbar support
- armrest type 5 ESD



Tip

To ensure the ESD safety of your chair you should regularly clean the castors so that they remain dust and dirt free.



>> Ergo 2300 ESD

ESD Dralon upholstered seat- and backrest

- height adjustment c. 46-59 cm
- work surface height c. 70-80 cm



>> 4400 PU Pro ESD

ESD PU Pro (polyurethane) seat- and backrest

- height adjustment c. 44-57 cm
- work surface height c. 70-80 cm



High chair with height adjustable footring (Ø 50 cm)

>> Ergo 2301 ESD

- height adjustment c. 54-73 cm
- work surface height c. 80-90 cm



>> Ergo 2302 ESD

- height adjustment c. 60-85cm
- work surface height c. 90-100 cm



>> Ergo 2308 ESD

High chair with height adjustable footplate that moves up and down with the seat

- height adjustment c. 60-85 cm
- work surface height c. 90-100 cm



High chair with height adjustable footring (Ø 50 cm)

>> 4401 PU Pro ESD

- height adjustment c. 52-71 cm
- work surface height c. 80-90 cm

>> 4402 PU Pro ESD

- height adjustment c. 58-83 cm
- work surface height c. 90-100 cm

>> 4408 PU Pro ESD

High chair with height adjustable footplate that moves up and down with the seat

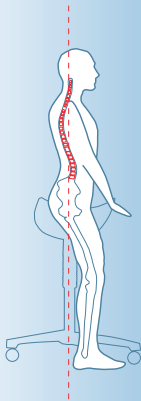
- height adjustment c. 58-83 cm
- work surface height c. 90-100 cm



SPECIFICATIONS

Healthy sitting posture

The shape of the saddle seat ensures that the pelvis tilts to the right position. This promotes the natural S curve of the spinal column. Your posture will be both more comfortable and more healthy!



ESD approved

Score chairs and footrests have been tested and approved in accordance with directive IEC 61340-5-1 by the "SP Technical Research Institute" in Sweden. This ensures you that you will buy an ESD safe chair or footrest.



Tip

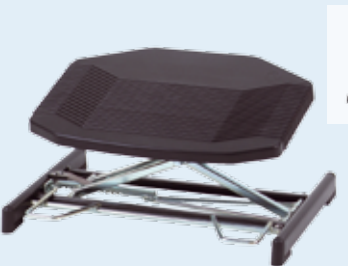
It is important that the lower leg makes an angle of at least 90° towards the upper leg. If your feet do not touch the ground, you need a footrest, footring or footplate attached to the chair.



>> Jumper/Amazone ESD

The Amazone is the narrower version of the Jumper. Also available with a backrest

- available in dralon or leatherette ESD
- available as a high or low model
- aluminium base ø 50 cm
- height adjustment c. 62-87 cm
- work surface height c. 90-100 cm



>> Basic 952 ESD

- foot operated
- height adjustment c. 8-29 cm



>> Sit-stand stool 2232 ESD

Suitable for workplaces with restricted legspace or work that requires alternate sitting and standing

- height adjustment c. 58-83 cm
- work surface height c. 90-100 cm



>> Opti 2200 ESD

- available in dralon or leatherette ESD
- ring shaped gaslift height adjustment
- height adjustment c. 41-54 cm
- work surface height c. 70-80 cm



>> 5000 ESD

For people up to 135 kg (21.2 st). Supplied with a synchro mechanism as standard. Available with a seat slide for 7 cm extra seat depth. Ideal for people with long upper legs

- available in dralon or leatherette ESD
- height adjustment c. 48-61 cm
- work surface height c. 70-80 cm

ESD Upholstery



Anthracite D07 ESD Dralon



Dark blue D89 ESD Dralon



Black K07 ESD Leatherette

